

SI-810PR

Barcode Label printing Scale



Pole type



Bench type

A new generation Barcode Label printing Scale solution to speed up your Weighing & Labelling operations and delight your customers with a more accurate and faster checkout experience.



Technical Specifications

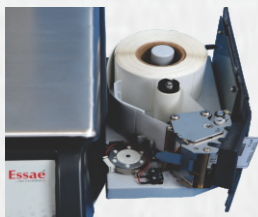
Description	Barcode Label Printing Scale
Capacity/Accuracy	6kg/1g, 15kg/2g, 31kg/5g
Platter Size	280x348mm
Label Width and Length (min~max)	25~54mm, 25~110mm
Label Thickness (max)	170microns
PLU	5000
Printing speed	80 mm/sec
Label Roll Diameter (max)	Outer: 120mm, Inner: 28mm
Standard Interfaces	1 x RS-232 Serial, 1 x Ethernet LAN
Dimension (L x W x D)	490mm x 360mm x 450mm

Salient Features



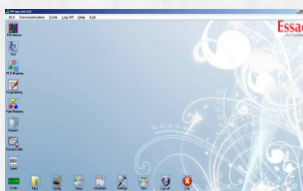
Graphic Display

- Bright LCD Display with green LED back light
- High contrast display for easy viewing in any lighting conditions



Label Printer

- Simple & User friendly design
- Quick changeover of label roll reduces customer waiting time
- Less wastage of labels during calibration
- Sensor for Door & Thermal head open prevents dust entry
- Peel off sensor



PC Application

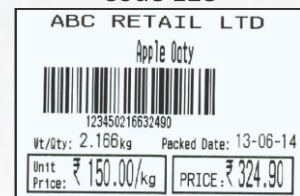
- PLU upload/download
- Cloning function reduces downtime
- User friendly label designer
- Flexible Barcode programming

Barcode formats

EAN 13



Code 128



Mechanical keyboard

- Long Life & High Reliability
- Better Key click feeling
- Less user fatigue

Essae-Teraoka Pvt. Ltd.

410, 100ft Road, 4th Block,
Koramangala, Bengaluru-560 034

info@essae.com

http://www.essae.com

+91 80 3021 3021

+91 80 3021 3001

1-800-425-3111

0-78488 12346

Essae[®]
...for Excellence

Your Essae representative

▲ Factories in Bengaluru and Goa ▲ 47 Branch Offices ▲ 250+ Service engineers ▲ 350+ Resellers/Partners

Note: The above model meets the statutory and regulatory requirements as per the provision of legal metrology Act 2009 and legal metrology (General) Rule, 2011. Specifications are subject to change without notice. Other names and logos used are property of respective brands.