

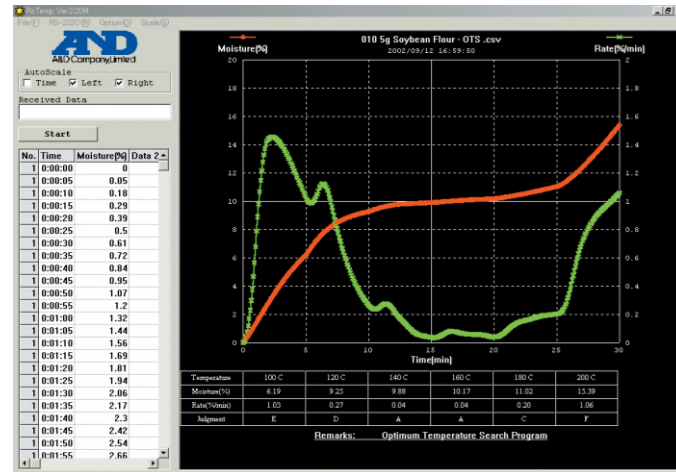
WinCT-Moisture

Measurement example

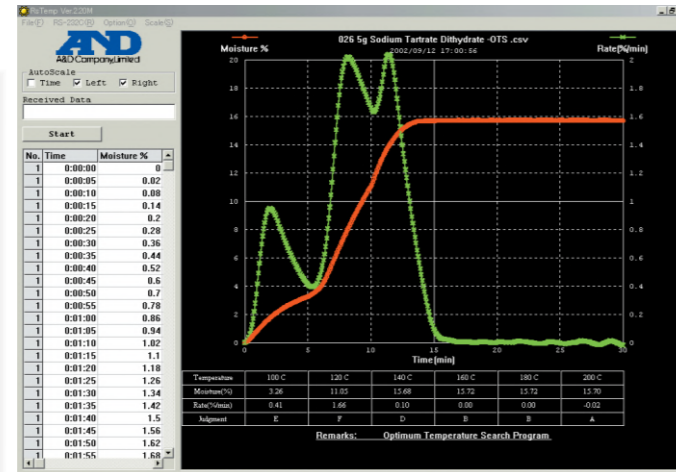
WinCT-Moisture consists of RsTemp software to determine the heating temperature and RsFig software for graphics.

1. Example of measurement using Rs Temp software to determine the heating temperature

Automatically changes the heating temperature (by your setting increments and interval time) within a range of 50°C - 200°C. From the rate of change in moisture over time measurement it can determine the optimum heating temperature for the sample.



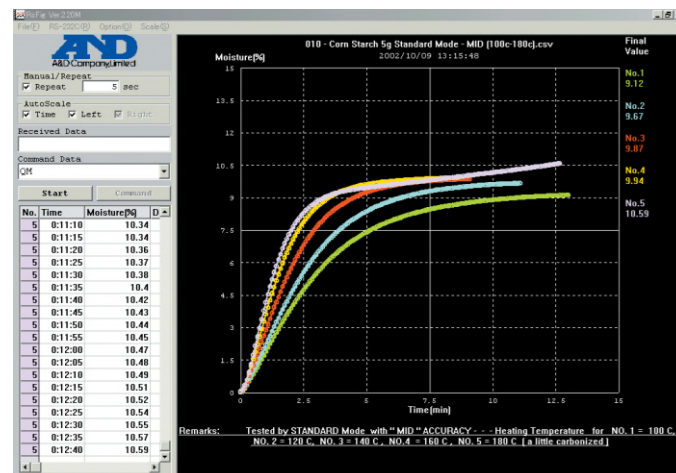
Soybean flour



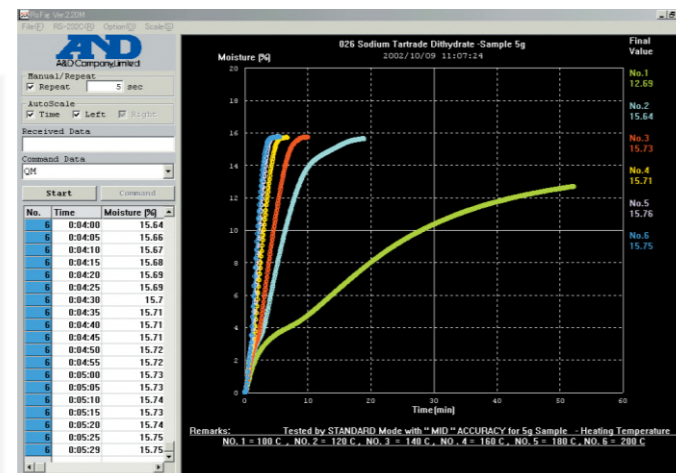
Sodium tartrate dihydrate

2. Example of measurement using RsFig graphics software

Can be moisture rate against time when the heating temperature is changed as well as showing the result of repeated measurement at a certain temperature. From the graph, the highest possible heating range for the sample and the quickest measuring time can be determined.



Corn starch



Sodium tartrate dihydrate

Specifications	MX-50
Measurement Method	400W straight halogen lamp heating system with SRA filter and SHS weighing technology
Max Sample Weight Capacity	51g
Weight Resolution	0.001g
Moisture Content Display	0.01% / 0.1%
Moisture Content Accuracy over 1g (Standard Deviation) over 5g	0.10% 0.02%
Heating Technology	Halogen lamp (Straight type, 400 Watt max, 5000 hours)
Drying Temperature (1°C increment)	50-200°C
Memory of Measurement Programs	20 sets
Measurement Programs	Standard Mode/Automatic Mode/Quick Mode/Timer Mode/Manual Mode
Measurement Mode	Moisture content(Wet or Dry base) /Dry content/Ratio/Weight
Heating Mode	Standard / Quick / Step /Ramp
Display Type	Large VFD
Interface	RS-232C standard
Data Memory Function	100
Operating Temperature	5-40°C (41-104°F) less than 85%RH
GLP/GMP/ISO	Available
Self Check Function	Standard
Communication Software	WinCT-Moisture standard
Sample Pan Size	Ø85mm
Power	AC 200V to 240V (1.5A), 50/Hz, Approx. 400W
Physical Dimension/Weight	215(W) x 320(D) x 173(H) / Approx. 6kg
Standard Accessories	Sample Pans - 20, Pan Handles -2, Spoon, Test Sample (30g of Sodium Tartrate Dihydrate), CD-ROM (WinCT-Moisture), Glass Fiber Sheet, RS-232C Cable, Display Cover, Dust Cover, Instruction Manual, Quick Reference Card, Power Cable, Fuse

Specifications are subject to change for improvement without notice.

Options:

- AD-8121 B Dot Matrix Compact Printer
- AX-MX-31 Sample Pan (Ø 85mm x 100pcs)
- AX-MX-41 Calibration Mass (20g, equivalent to OIML class F1)
- AX-MX-43 Certified Temperature Calibrator



AD-8121B
Dot Matrix Compact Printer



The contents of this catalogue are subject to change due to modifications and/or other reasons.

MARKETED BY:

Essae-Teraoka Pvt. Ltd.

410, 100ft Road, 4th Block,
Koramangala, Bengaluru-560 034

info@essae.com

http://www.essae.com

+91 80 3021 3000

+91 80 3021 3001

1-800-425-3111

0-78488 12346



Your Essae representative

▲ Factories in Bengaluru and Goa ▲ 47 Branches ▲ over 250 Service engineers ▲ 300+ Resellers/Partners

Note: The above model meets the statutory and regulatory requirements as per the provision of legal metrology Act 2009 and legal metrology (General) Rule, 2011. Specifications are subject to change without notice. Other names and logos used are property of respective brands.



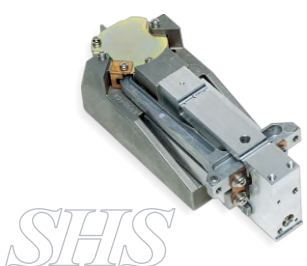
Moisture Analyzers MX-50

Form No. CAT-MX-50-023-R03



Select the best moisture analyzer for your application-Test with The Best

A&D's Moisture Analyzer
MX-50



Fast and uniform heating with halogen lamp and innovative SRA technology
Straight halogen lamp and uniquely designed SRA (Secondary Radiation Assist) filter gives shorter measurement time, thanks to fast and uniform heating

High Repeatability
with SHS (Super Hybrid Sensor) featured as the weight sensor, ultra accurate moisture content determination is possible based on high precision weighing of even a small sample

Standard win CT-Moisture for real-time graph displaying
Win CT-Moisture is an original software application designed to display a graph of moisture content rate change while measuring with a connected PC

Sodium Tartrate Dihydrate comes as standard for accuracy checking
Sodium Tartrate Dihydrate is a chemical material that has stable moisture content of 15.66%^{+0.01}, and thus is best to use for accuracy check to maintain the reference value of the analyzer

Calibration of the heater temperature
With the temperature calibration (optional), calibration result can be output in the format that conforms to GLP, GMP, ISO

Memory function
According to sample up to 20 suitable measurement conditions can be stored and recalled, which saves time and prevents the user from making a mistake when setting
For measurement result, up to 100 data can be stored and output at once

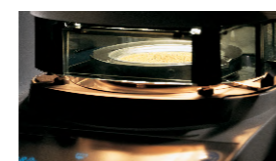
Five measurement programs
Five choices of measurement programs, Standard, Automatic, Quick, Timer, and Manual Mode are provided
Standard Mode: just measurement accuracy, HI, MID or LO needs to be set
Automatic Mode: Ends measurement when moisture content changes at a rate less than the set rate
Quick Mode: Begins heating samples at 200°C for 3 minutes, then is the same as Automatic Mode
Timer Mode: Continues measurement for a set duration of time (1~60mins.: by 1min, 60~480mins.: by 5mins.)
Manual Mode: STOP button should be pressed to end measurement (Max. heating time: 480mins.)

Selectable Heating Mode
Choose the heating mode from standard, quick, step and ramp heating modes for the most suitable measurement

Clear and easy-to-see, large VFD display
Measurement, setting value, change in moisture content, action status, data number and other

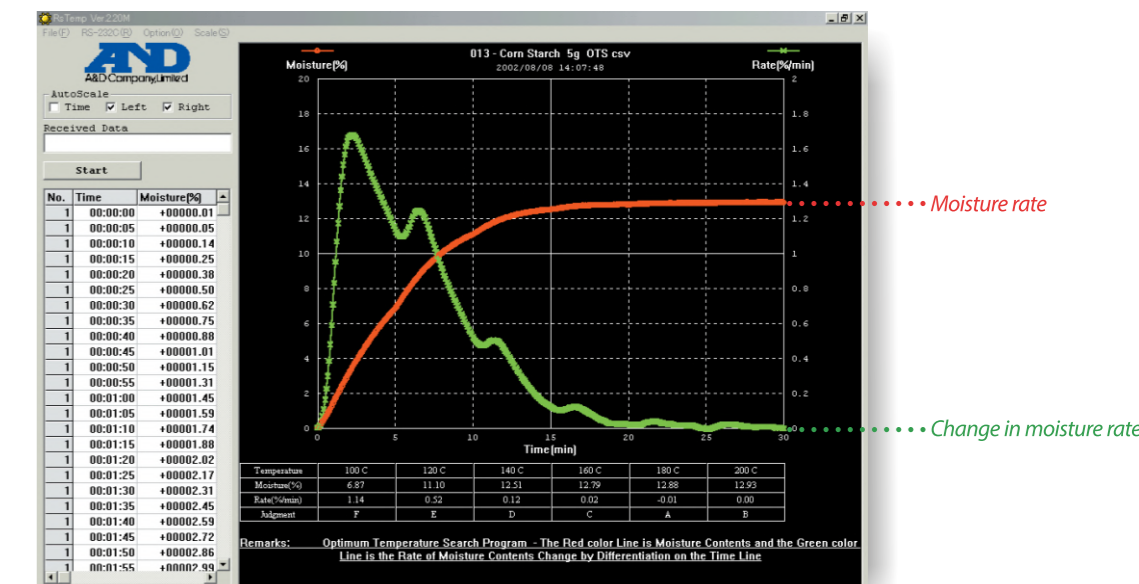


Progress Window for heating check
Heating process can be checked through translucent window
Self check function
Defect check function is available along with temperature control
Quick Reference card
A convenient operating guide is installed at the bottom of the analyzer
Standard RS-232C
Bi-directional communication with a PC or connects directly to a printer
Conformity to GLP, GMP, GCP, and ISO with date/time, ID, Calibration data and check records outputs
Data output for daily record management



WinCT-Moisture

With our WinCT-Moisture software, data measured by the Moisture Analyzers can be easily displayed on your computer.
Effective for determine measurement conditions such as heating temperature, and useful in reducing the time needed for measurement and improving accuracy.



Displays moisture rate changes over time in a graph (Rs Fig)
Displays changes in moisture rate in real time

Measures moisture rate in a minimum time with excellent accuracy
Heats at the highest temperature without change the physical properties of the sample and provides measurements with good repeatability

Automatically determines the most suitable heating conditions in a short time (Rs Temp)
Automatically changes the heat applied by the set increments and interval time within a range of 50°C-200°C. From the moisture rate change over the time can determine the most suitable heating temperature in one time measurement (*patent pending)

Shows sample data summary
Provides a data summary for the sample with the results of moisture rate change for the representative material's measurement
Calculates measurement data statistics
Saves the recorded data as a CSV file
Determine other changes to the sample material in addition to moisture rate